

COURSE NO: 1

SOUTHERLY

1 TO P

2 TO P

3 TO S

4 TO S

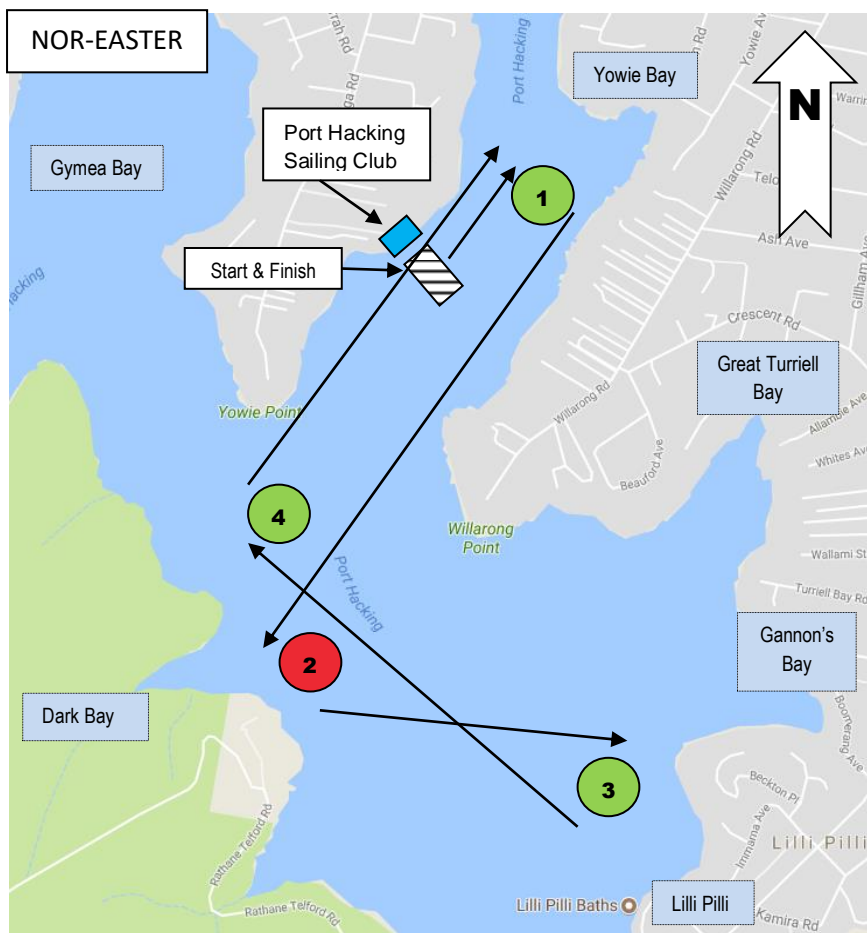
OPEN & HERON's = 2 LAPS

NS14's = 3 LAPS

THEN

1 TO P

TO FINISH



COURSE NO: 2

NOR-EASTER

1 TO S

2 TO P

3 TO S

4 TO S

1 TO S

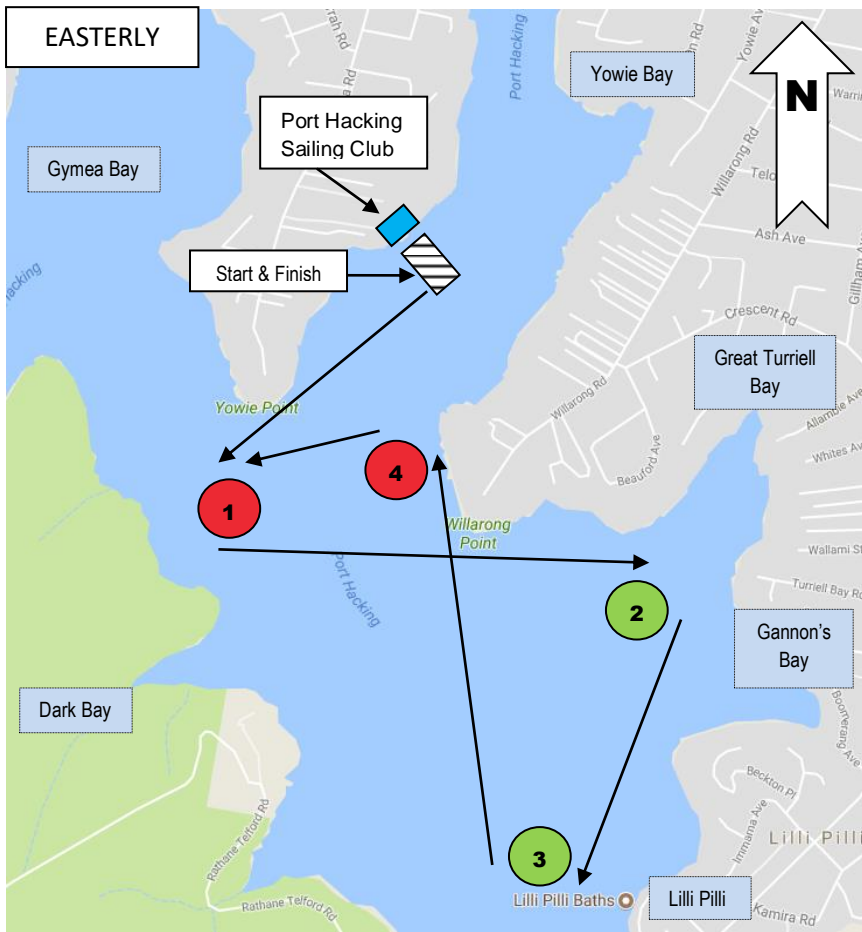
OPEN & HERON's = 2 LAPS

NS14's = 3 LAPS

THEN

4 TO S

TO FINISH



COURSE NO: 3

EASTERLY

1 TO P

2 TO S

3 TO S

4 TO P

OPEN & HERON's = 2 LAPS

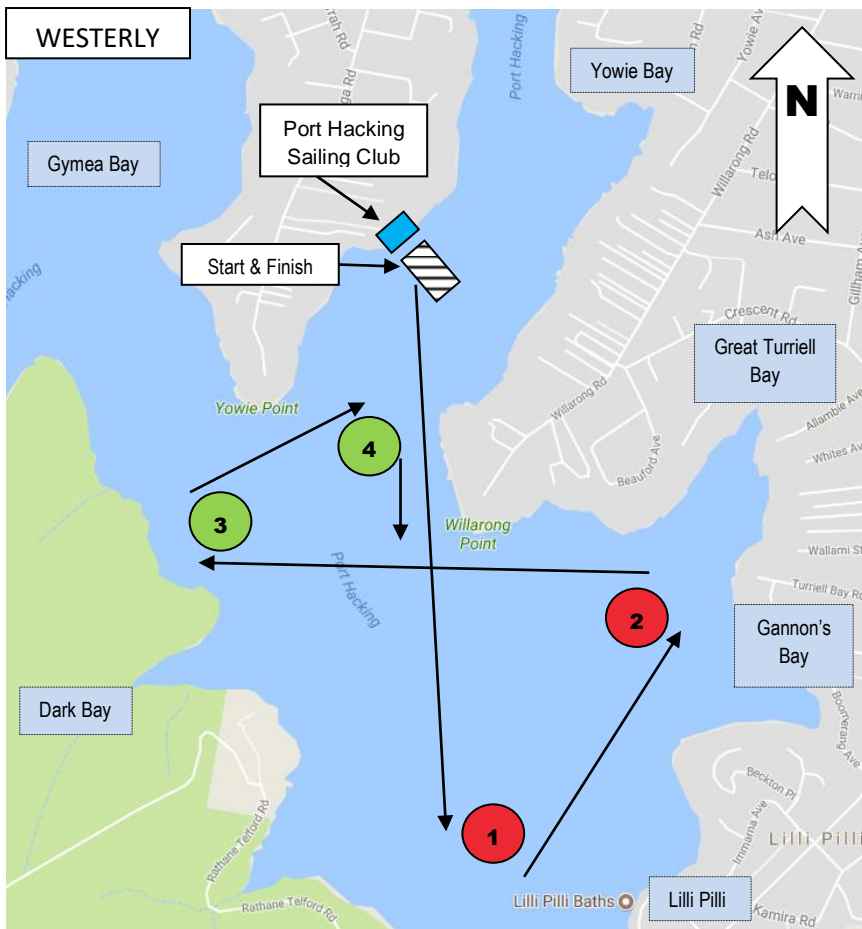
NS14's = 3 LAPS

THEN

2 TO S

1 TO P

TO FINISH



COURSE NO: 4

WESTERLY

1 TO P

2 TO P

3 TO S

4 TO S

OPEN & HERON's = 2 LAPS

NS14's = 3 LAPS

THEN

1 TO S

TO FINISH